



SOME BIRDS SING SONGS
KILLER VOLLEYBALL SERVE



BABY TURTLES HEAD TO THE OCEAN
COLOR BLINDNESS



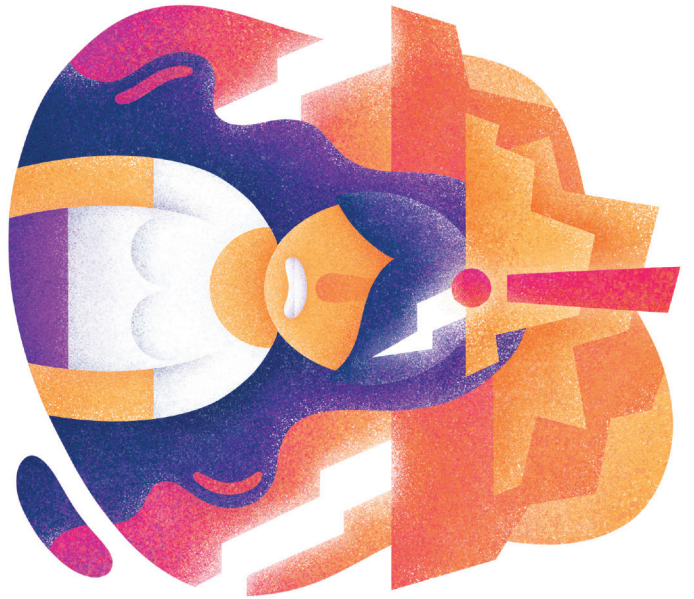
MATHEMATICAL ABILITY
A PERSON'S SHOE SIZE





NATURALLY CURLY HAIR

THE WAY YOU TIE YOUR SHOES



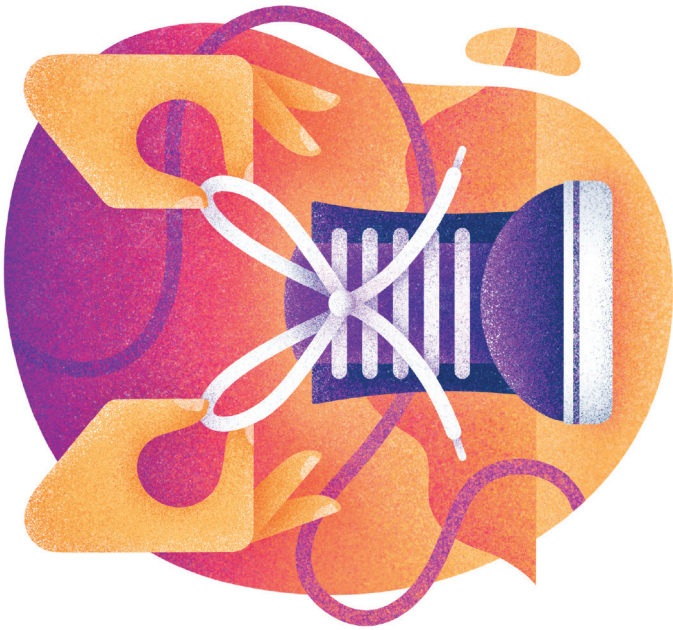
ANXIETY DISORDERS

LEFT-HANDEDNESS



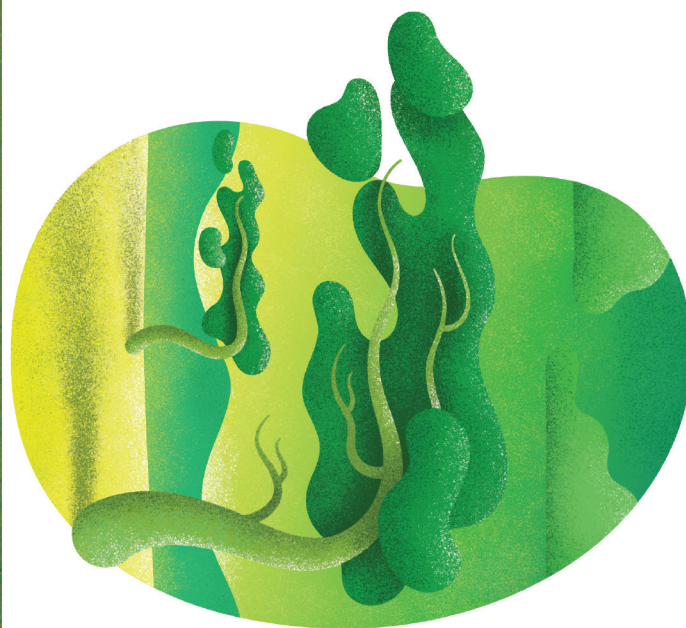
CAT PERSON OR DOG PERSON

LANGUAGES SPOKEN

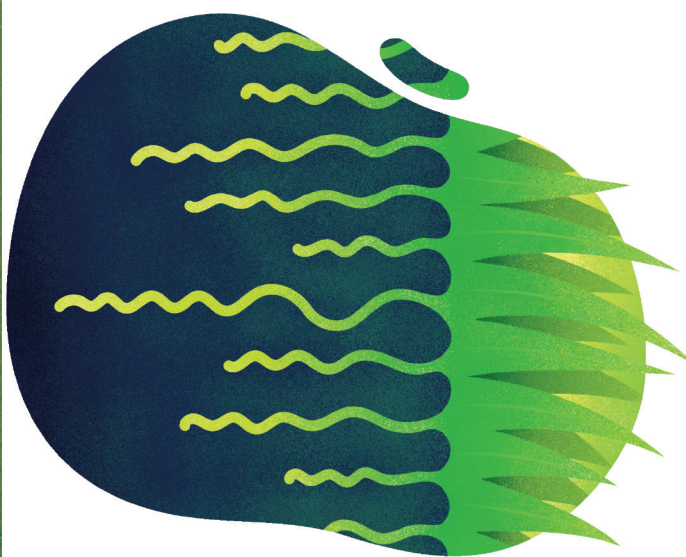




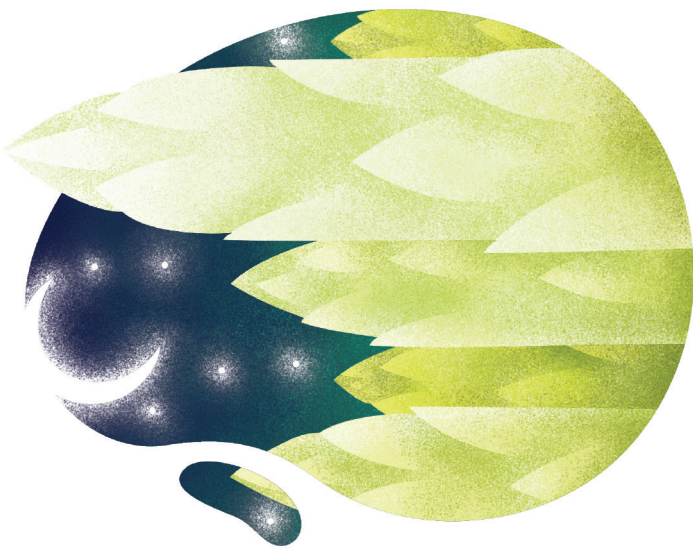
CARVED ASPEN TREES GET SCARS



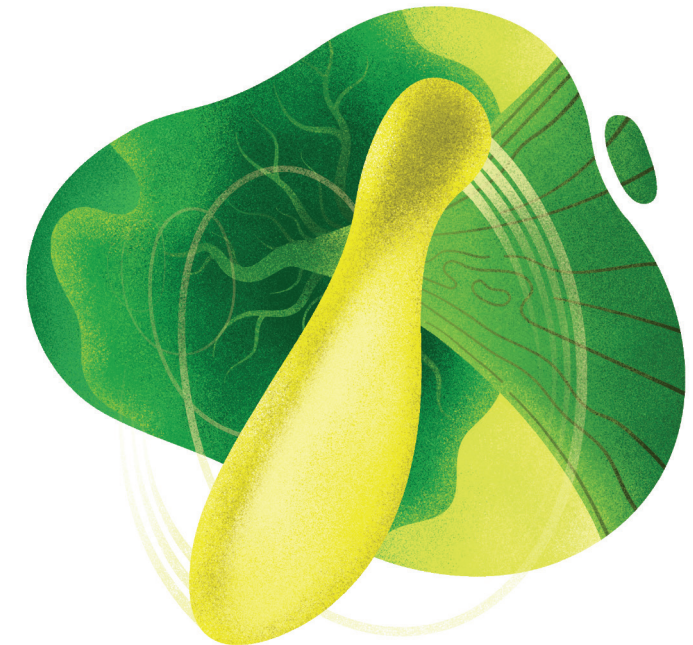
TREES GROWING ON A WINDY SHORE



SOME GRASS GROWS LONG ROOTS



WHITE ASPARAGUS GROWN IN DARKNESS



MAPLE SEEDS FLY FAR ON A WING



INFESTED OAK TREES GROW GALLS



SHAMROCK GROWING TOWARD LIGHT

DIGESTING INSECTS FOR NITROGEN



INVISIBLE "LANDING STRIPS" FOR BEES

SOME CRESS PLANTS RESIST MILDEW



LOW MAGNESIUM = YELLOW LEAVES

ROSES APPEAR IN MANY COLORS

