

Inside a Cell

Logistics

Time Required

- ▶ **Class Time:**
30 minutes
- ▶ **Prep Time:**
10 minutes

Materials

Student handouts, computers with internet access

Prior Knowledge Needed

None

Appropriate For:

Primary Intermediate Secondary College

Credits

Kerry Geisen, Jordan High School, Jordan, MN
Molly Malone, Genetic Science Learning Center
Harmony Starr, Genetic Science Learning Center (illustrations)

Funding

Funding for this module was provided by a Science Education Partnership Award from the National Center for Research Resources, a component of the National Institutes of Health.

Abstract

An optional fill-in-the-blank table to use in conjunction with the interactive activity of the same title ([url](http://learn.genetics.utah.edu) above). Students navigate the inside of a cell to see the organelles in action and learn their function. An answer key is provided.

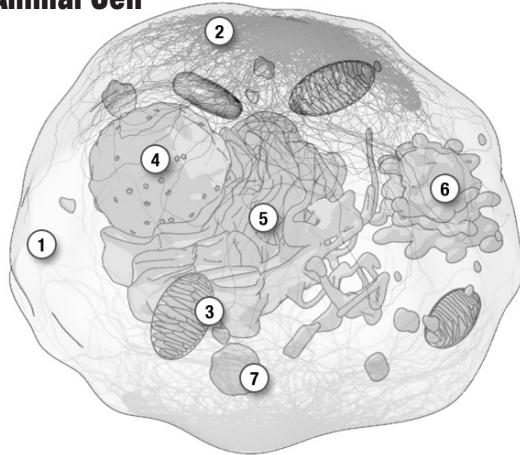
Learning Objectives

- ▶ Cells have internal parts, each with a specific function.
- ▶ The interior of a cell is a dynamic and busy environment.

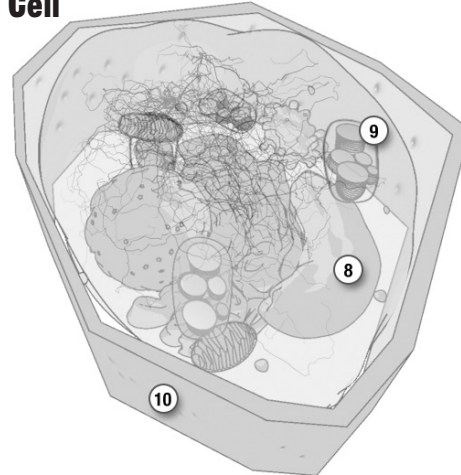
Inside A Cell

Answer Key

Animal Cell



Plant Cell



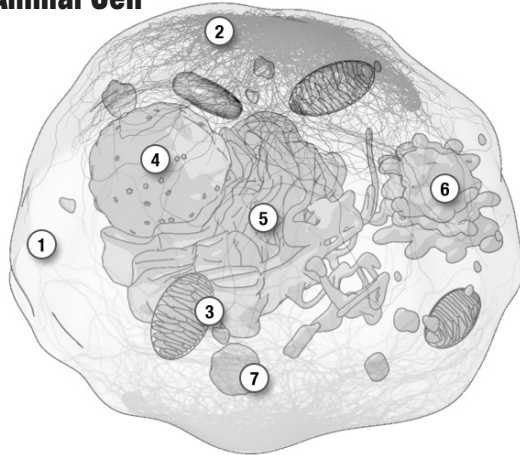
	Organelle	What does it do?	Other Notes
1	Cell Membrane	<i>Allows molecules to pass in and out of the cell.</i>	<i>Formed by lipid molecules that naturally arrange themselves into spheres.</i>
2	Cytoskeleton	<i>Provides structure, helps organize cell division, functions as a system of roads for motor proteins.</i>	
3	Mitochondrion	<i>Generates a cell's energy.</i>	<i>Has its own genome, and circular DNA similar to bacteria.</i>
4	Nucleus	<i>Stores and protects DNA, DNA is copied to RNA here.</i>	<i>Pores selectively allow molecules in and out.</i>
5	Endoplasmic Reticulum	<i>Provides a place for ribosomes to carry out protein synthesis, stores enzymes, and provides a surface upon which chemical reactions can occur.</i>	<i>1/2 the total amount of membrane in a cell.</i>
6	Golgi Apparatus	<i>Provides an area where macromolecules are tagged with labels.</i>	<i>Transport proteins use these labels to deliver the macromolecules to the proper place in the cell.</i>
7	Lysosome	<i>Contains digestive enzymes that break down discarded proteins.</i>	<i>This is only one example of many types of vesicles.</i>
8	Vacuole	<i>Stores nutrients, breaks down waste, helps cell grow, provides pressure.</i>	<i>Only in plants.</i>
9	Chloroplast	<i>Converts energy from the sun into sugar.</i>	<i>Have their own genome. Only in plants.</i>
10	Cell Wall	<i>Protects cell from injury and provides support.</i>	<i>Only in plants.</i>

Name _____

Date _____

Inside a Cell

Animal Cell



Plant Cell



	Organelle	What does it do?	Other Notes
1	Cell Membrane		
2	Cytoskeleton		
3	Mitochondrion		
4	Nucleus		
5	Endoplasmic Reticulum		
6	Golgi Apparatus		
7	Lysosome		
8	Vacuole		
9	Chloroplast		
10	Cell Wall		